

# Maxi Series C-MAXIONE

*Microclimate Generators*

Monitoraggio Web  
by Software CWS IoT web



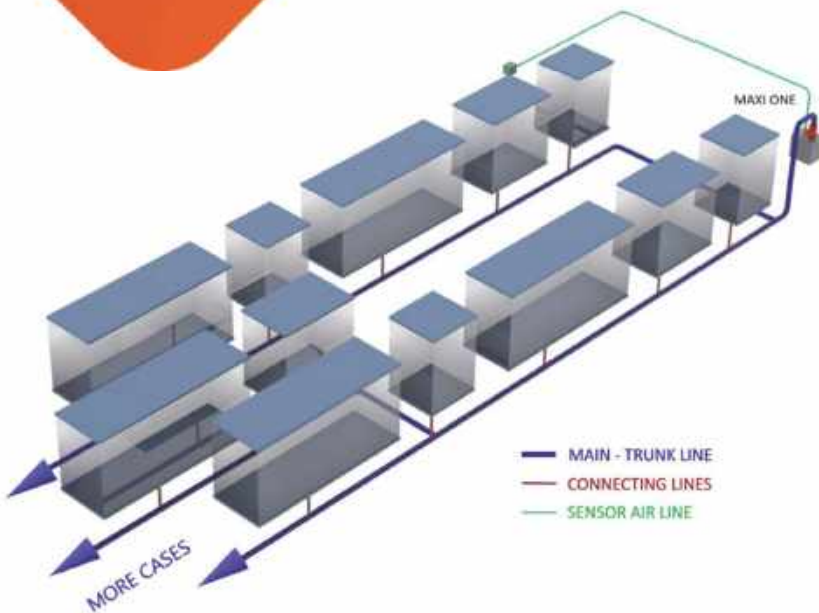
Preservatech's central system, based on the Maxi One humidity generator is a perfect solution for new or renovated galleries with a large number of museum display cases, storage cabinets and small archive rooms.

Our fully automatic system delivers a constant stream of filtered air at a humidity set between 30 -70% to multiple display cases with a combined volume of up to a few hundred cubic meters.

# C-MAXIONE OVERVIEW



The Maxi series units provide a continuous positive, low-pressure flow of filtered air to display or storage cases. Displaced air from the case is exhausted through naturally occurring leakage.



Constant airflow may be set for any humidity from 30% to above 65% at ambient temperatures of 70 degrees F / 21 degrees C and can be distributed to multiple enclosures.



Output variation at **constant temperature** is typically less than +/- 1%. Depending on unit and application, a constant output volume from less than 15 cfm / 425 l/m to over 40 cfm / 1150 l/m can be generated. Depending on enclosure leakage, humidity targets, and ambient conditions, a **single unit can provide a maximum treatment capacity** for over 12,000 ft<sup>3</sup> / 400m<sup>3</sup> cubic meters of enclosures.



## C-MAXIONE ADVANTAGES

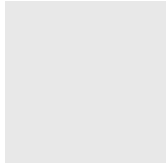
- ✓ Fully automatic system usually keeping humidity within a  $\pm 1\%$  at target.
- ✓ Much lower cost compared to controlling humidity inside the whole gallery.
- ✓ Very little maintenance
- ✓ Online monitoring service
- ✓ Emailed alarm messages in case of malfunction.

## C-MAXIONE

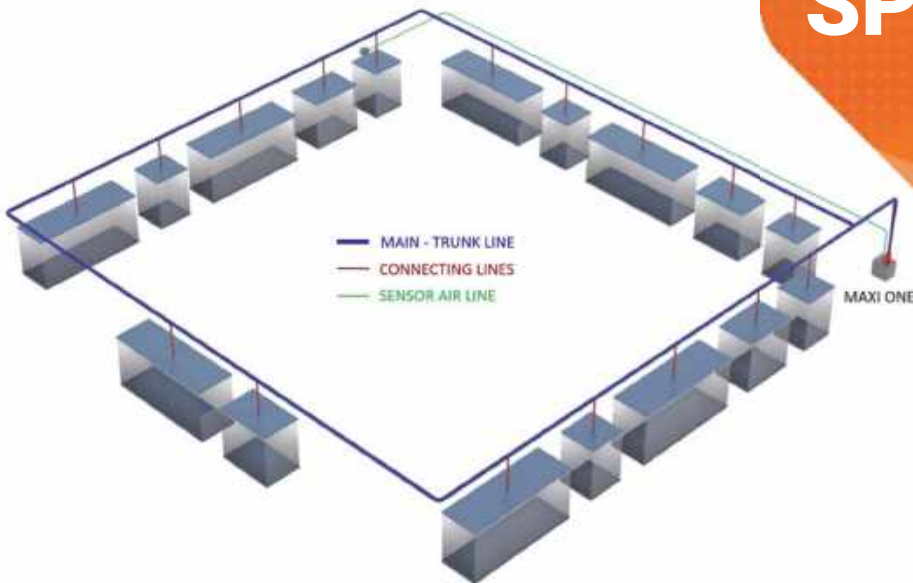


Maxi units can be located up to 400 feet / 150 meters from the gallery, in a machine room, janitorial closet, or any space with adequate room, ventilation, water supply, floor drain, and power connections. The footprint of the unit is 90 cm X 65 cm), The unit should be floor mounted, and come on casters for easy movement. Noise levels are surprisingly low, allowing locations close to treated enclosures.

The unit will operate in an environmental range of 15 to 30 degrees C however optimum performance will be found at lower ambient temperatures. The unit comes complete with a high quality temperature and humidity sensor. which must be located in the gallery. Sensors may be wall mounted, or optionally placed in a "representative" showcase. Environmental data is returned to the control panel on the unit by cable or wireless system.



# C-MAXIONE SPECIFICATION



- ✓ **Unit Size:** 856mm wide x 695mm deep x 1190 height (including 4" diameter swivel casters)
- ✓ **Body:** Steel frame, aluminum covers, black powder coated.
- ✓ **Nominal Weight:** 200 kg (reservoir empty), ~ 250 kg (reservoir full)
- ✓ **Power Supply (North America):** 110V/220V/1/60, 3 wires plus ground, 20 Amp
- ✓ **Power Supply (Other):** 230V/1/50, 2 wires plus ground, 15 Amp
- ✓ **Nominal Power Consumption:** 12 Amps @ 220V when generating 50% RH @ 21C
- ✓ **Maximum Operating Amperage:** 15 Amps @ 220V/1/60
- ✓ **Display and control:** 10" touch screen - internet if connected to network
- ✓ **Operating Temperatures:** 15° – 35° C;
- ✓ **Filter Media:** Optional Intake filter: Combination of (Carbon / HEPA)
- ✓ **Water Supply:** 1/4" hose connection for domestic line. An optional reservoir is available.
- ✓ **Drainage:** Floor drain in vicinity of unit, or optional containment tray.
- ✓ **Output capacity:** at working temperature 15° – 35°C, RH 30%-75%, airflow can be supplied to showcases ≤400m<sup>3</sup> (exhibition cabinet air exchange rate: ≤2d-1). Ultimate device capacity will depend on the combined leakage of cases, supply runs, and desired performance parameters.
- ✓ **Standard Accessories Included:** Off-site alarm connections; gallery mounted sensor box; electro-mechanical dump valve; operating manual and trouble-shooting guide.